

# ARDEN P.U.D. POD G SOUTH REPLAT

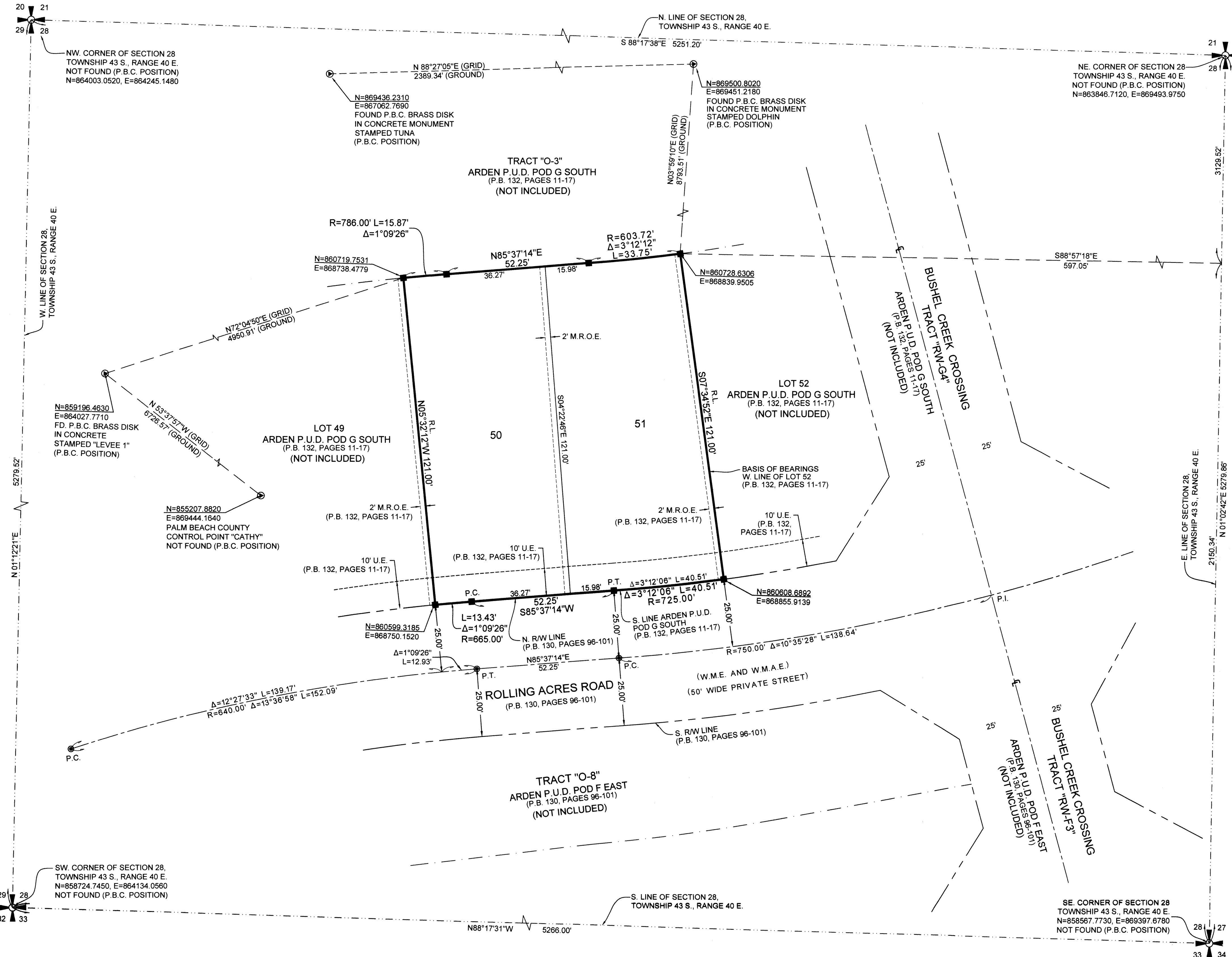
BEING A REPLAT OF LOTS 50 AND 51, ARDEN P.U.D. POD G SOUTH, AS RECORDED IN PLAT BOOK 132, PAGES 11 THROUGH 17, INCLUSIVE, PUBLIC RECORDS OF PALM BEACH COUNTY, FLORIDA, AND LYING IN SECTION 28, TOWNSHIP 43 SOUTH, RANGE 40 EAST, PALM BEACH COUNTY, FLORIDA.

8

**COORDINATE NOTE:**  
 STATE PLANE COORDINATES SHOWN ARE GRID DATUM, NAD 83 1990 ADJUSTMENT, FLORIDA EAST ZONE, COORDINATE SYSTEM 1983 STATE PLANE, TRANSVERSE MERCATOR PROJECTION  
 LINEAR UNIT = US SURVEY FEET  
 ALL DISTANCES ARE GROUND  
 SCALE FACTOR = 0.99999219  
 GROUND DISTANCE X SCALE FACTOR = GRID DISTANCE  
 BEARINGS AS SHOWN HEREON ARE GRID DATUM, NAD 83 1990 ADJUSTMENT, FLORIDA EAST ZONE.

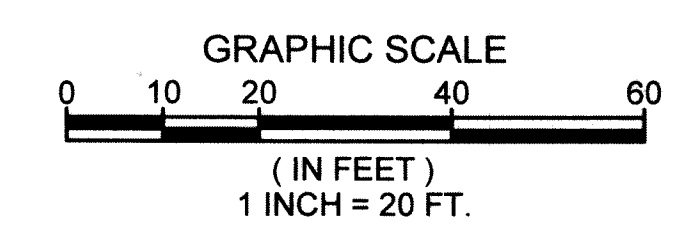
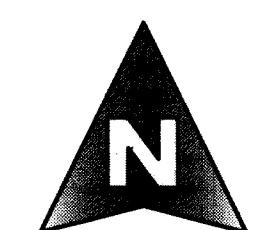
**PREPARING SURVEYOR & MAPPER'S STATEMENT**

THIS INSTRUMENT WAS PREPARED BY LESLIE C. BISPOTT, P.S.M. OF MICHAEL B. SCHORAH AND ASSOCIATES, INC., 1850 FOREST HILL BOULEVARD, SUITE 206, WEST PALM BEACH, FLORIDA, 33406.

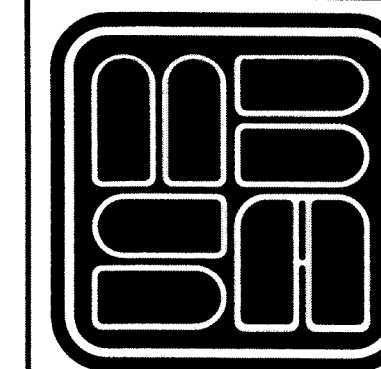


**LEGEND**

- P.C.P. = PERMANENT CONTROL POINT
- P.R.M. = PERMANENT REFERENCE MONUMENT
- O.R.B. = OFFICIAL RECORD BOOK
- P.B. = PLAT BOOK
- PGS. = PAGES
- D.B. = DEED BOOK
- P.B.C. = PALM BEACH COUNTY
- RAW = RIGHT OF WAY
- CL = CENTERLINE
- U.E. = UTILITY EASEMENT
- D.E. = DRAINAGE EASEMENT
- R = RADIUS
- L = ARC LENGTH
- Δ = CURVE CENTRAL ANGLE
- ⊙ = FOUND PALM BEACH COUNTY DISK IN CONCRETE
- ⊙ = SET NAIL AND ALUMINUM DISK, STAMPED P.C.P. L.B. 2438
- = SET 4"x4"x24" C.M. WITH ALUMINUM DISK, STAMPED P.R.M. L.B. 2438
- = FOUND 4"x4"x24" C.M. WITH ALUMINUM DISK, STAMPED P.R.M. L.B. 2438 (UNLESS OTHERWISE SHOWN)
- = SET MAG NAIL AND 1 1/4" BRASS WASHER STAMPED PRM LB 2438
- C.L. = CHORD LENGTH
- C.B. = CHORD BEARING
- R.L. = RADIAL LINE
- N = NORTHING, WHEN USED WITH COORDINATES
- E = EASTING, WHEN USED WITH COORDINATES
- FD. = FOUND
- OA = OVERALL
- C.M. = CONCRETE MONUMENT
- L.E. = LANDSCAPE EASEMENT
- NO. = NUMBER
- P.S.M. = PROFESSIONAL SURVEYOR AND MAPPER
- P.U.D. = PLANNED UNIT DEVELOPMENT
- W.M.E. = WATER MANAGEMENT EASEMENT
- W.M.A.E. = WATER MANAGEMENT ACCESS EASEMENT
- NPBCID = NORTHERN PALM BEACH COUNTY IMPROVEMENT DISTRICT
- LB = PROFESSIONAL SURVEYOR AND MAPPER BUSINESS LICENSE NUMBER
- EB = PROFESSIONAL ENGINEER BUSINESS LICENSE NUMBER
- P.C. = POINT OF CURVATURE
- P.T. = POINT OF TANGENCY
- P.R.C. = POINT OF REVERSE CURVATURE
- N.T. = POINT OF NON TANGENCY
- M.R.O.E. = MAINTENANCE AND ROOF OVERHANG EASEMENT
- ⊕ = SECTION CORNER



SHEET 2 OF 2



**MICHAEL B. SCHORAH & ASSOCIATES, INC.**  
 1850 FOREST HILL BLVD., SUITE 206  
 WEST PALM BEACH, FLORIDA 33406  
 EB# 2438 TEL. (561) 968-0080 FAX. (561) 642-9726 LB# 2438

**ARDEN P.U.D. POD G SOUTH REPLAT**